

Portcast- Intelligent Container Visibility

Predict and optimize your supply chain in real-time

Problem with current supply chains

In this digital age, the supply chain industry still suffers from static and unreliable carrier schedules

On average, carriers only send an update every 2 weeks. This lack of visibility has led to the **loss of customers** and poor performance in delivering shipments on-time

With **40 emails** spent on average to chase an individual container, companies face a significant loss of staff productivity

Shouldn't there be a better data-driven solution that not only tracks but also predicts the ETA of any container?

Introducing Intelligent container visibility

Build an edge with dynamic container tracking

By tapping on **machine learning** and **real-time data** from multiple sources, Portcast provides you with real-time and accurate prediction of any container you are tracking

Use the insights provided in real-time to respond dynamically for **better customer satisfaction** and **improved OTIF performance**

This solution is suitable for: Carriers, freight forwarders, manufacturers and ports

"The service levels of freight forwarders are increasingly going to be measured by on-time performance and intelligent visibility of where the product is at any time"

Head of ocean freight

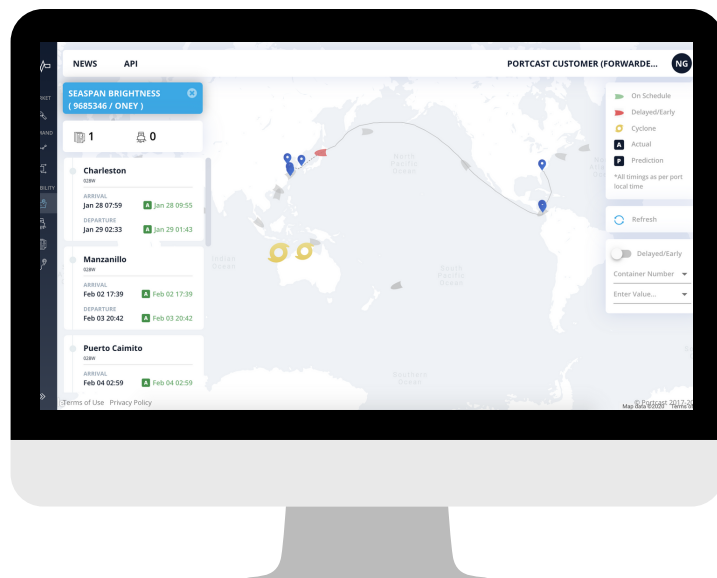
Key Metrics

48%

The percentage of ships more than 12 hours late on average

\$4000

Cost of transporting a container using expedited air freight due to last minute notification on shipping delay



Contact us for a demo today:
contact@portcast.io